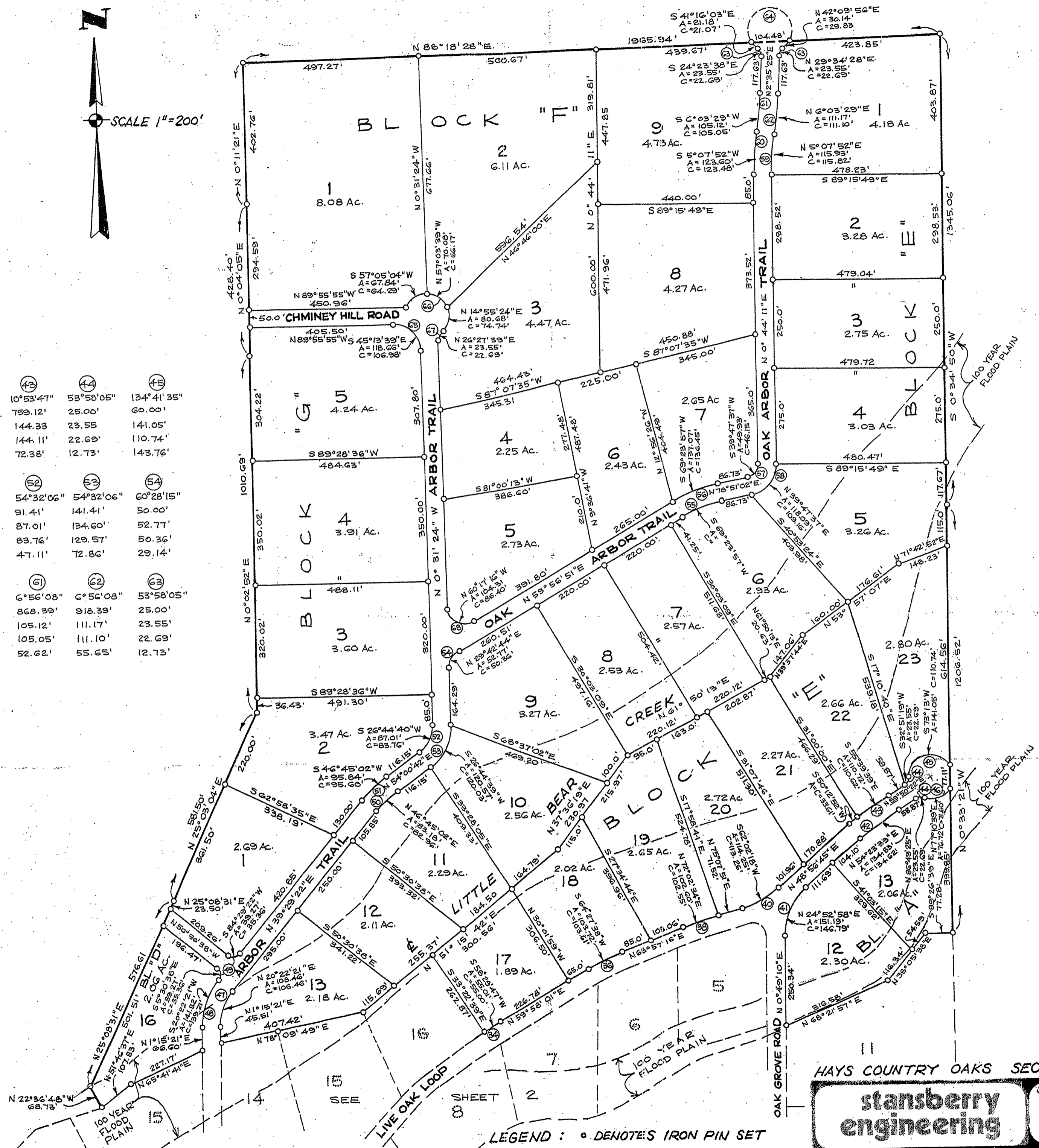




CURVE DATA

	34	36	38	40	41	42	43	44	45
I	6°33'45"	8°59'15"	6°10'35"	26°11'06"	48°07'35"	10°53'31"	10°53'47"	53°58'05"	134°41'35"
R	1071.55'	661.20'	951.76'	250.00'	180.00'	709.12'	799.12'	25.00'	60.00'
A	122.73'	103.72'	102.60'	114.25'	151.19'	134.83'	144.33'	23.55'	141.05'
C	122.67'	103.61'	102.55'	113.26'	146.79'	134.62'	144.11'	22.69'	110.74'
T	61.43'	51.97'	51.35'	58.14'	80.38'	67.62'	72.38'	12.73'	143.76'
	46	47	48	49	50	51	52	53	54
I	73°15'37"	38°14'01"	38°14'01"	90°00'	14°31'20"	14°31'20"	54°32'06"	54°32'06"	60°28'15"
R	60.00'	162.53'	212.53'	25.00'	328.18'	378.18'	91.41'	141.41'	50.00'
A	76.72'	108.46'	141.82'	39.27'	83.18'	95.85'	87.01'	134.60'	52.77'
C	71.60'	106.46'	139.21'	35.36'	82.96'	95.60'	83.76'	129.57'	50.36'
T	44.61'	56.34'	73.67'	25.00'	41.82'	48.19'	47.11'	72.86'	29.14'
	55	56	57	58	59	60	61	62	63
I	18°54'11"	18°54'11"	78°06'51"	78°06'51"	8°47'22"	8°47'22"	6°56'08"	6°56'08"	53°58'05"
R	365.45'	415.45'	36.62'	86.62'	755.71'	805.71'	868.39'	918.39'	25.00'
A	120.57'	137.07'	49.93'	118.09'	115.93'	123.60'	105.12'	111.17'	23.55'
C	120.03'	136.45'	46.15'	109.16'	115.82'	123.48'	105.05'	111.10'	22.69'
T	60.84'	69.16'	29.71'	70.29'	58.08'	61.92'	52.62'	55.65'	12.73'
	64	65	66	67	68				
I	287°56'12"	89°24'31"	208°45'09"	53°58'05"	119°31'45"				
R	60.00'	76.04'	60.00'	25.00'	50.00'				
A	301.53'	118.66'	218.61'	23.55'	104.31'				
C	-	106.98'	-	22.69'	86.40'				
T	-	75.26'	-	12.73'	85.79'				



HAYS COUNTY OAKS SEC. 2

stansberry engineering

SHEET 3 OF 3

LEGEND : • DENOTES IRON PIN SET